

**Tillbridge Solar Project
EN010142**

**Volume 6
Environmental Statement**

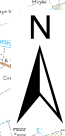
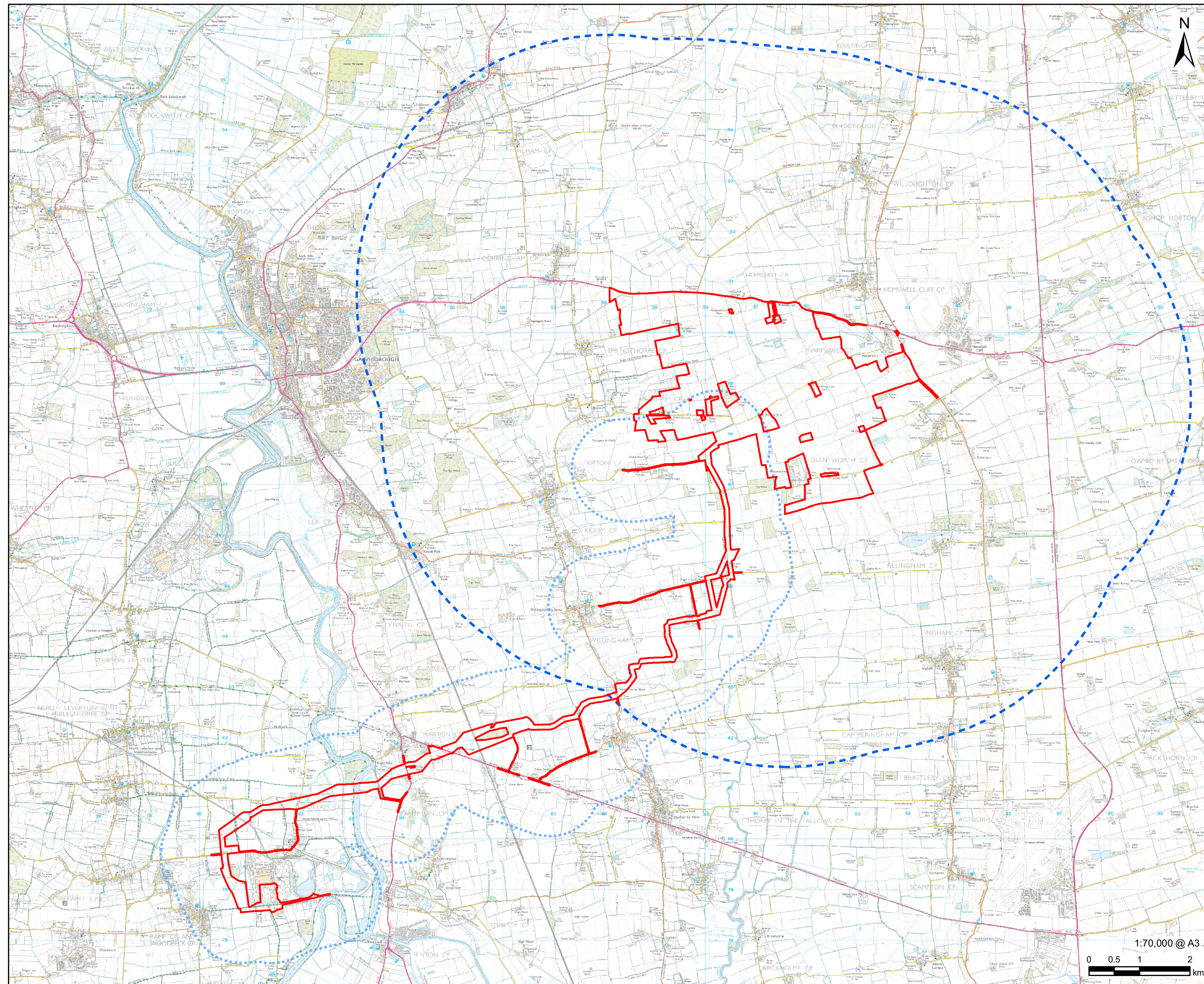
**Figure 12-3: LVIA Study Area
Document Reference: EN010142/APP/6.3**

**Regulation 5(2)(a)
Infrastructure Planning (Applications: Prescribed Forms and
Procedure) Regulations 2009**

**April 2024
Revision Number: 00**

tillbridgesolar.com

Revision: 0 Drawn: HW Checked: LL Approved: CW Date: 2024-01-31
Filename: i:\na.aecom\com\fs\EMEALondon-UK\ON06\Legacy\UKLON06\PPSW001-V1\DP\Library\GIS_DATA\Projects\Greta III\Layout\Tillbridge SolarES\Chapter 12 - Landscape\Tillbridge SolarES\Chapter 12 - Landscape\TillbridgeSolar_LVIA_Figure 12-3_LVIAStudyArea.mxd



AECOM

PROJECT
Tillbridge Solar Project

CLIENT
Tillbridge Solar Ltd

CONSULTANT
Aldgate Tower
2, Leman Street
London, E1 8FA
United Kingdom
T +44-0207-645-2000

- LEGEND**
- Order limits
 - Principal Site - 5km Buffer
 - Cable Route Corridor - 1km Buffer

NOTES
Contains Ordnance Survey Data © Crown Copyright and database right 2024.
© Crown copyright and database rights 2024.
Ordnance Survey 0100031673.

ISSUE PURPOSE
DCO Submission
PROJECT NUMBER
60677969
FIGURE TITLE
LVIA Study Area

FIGURE NUMBER
Figure 12-3



This drawing has been prepared for the use of AECOM's client. It may not be used, modified, reproduced or relied upon by third parties, except as agreed by AECOM or as required by law. AECOM accepts no responsibility, and denies any liability whatsoever, to any party that uses or relies on this drawing without AECOM's express written consent. Do not scale this document. All measurements must be obtained from the stated dimensions.